

Flanged Control Valve 7037

with integrated positioner

1/2" up to 3", 580 psi



Pneumatically operated control valves for neutral through to highly aggressive media.

- Integrated positioner
- Compact design
- All parts contacting the fluid made from stainless steel
- Temperatures up to 392°F
- Working pressure up to 40 bar
- For temperatures from -148°F up to +428°F
- Also in pressure released version

Technical Information

Nominal sizes	1/2" up 3"
Body material	CF8M
Connection	Flanges acc. ANSI B16.5-Class 150 or DIN EN 1092-1
Dimensions	Acc. ANSI/ISA-75.08.01 or DIN EN 558-1 Row 1
Nominal pressure	ANSI150 or PN40
Max. fluid temperature:	
with metal bonnet	-22°F up to +392°F, opt. -148°F up to +428°F
with plastic bonnet	-22°F up to +275°F
with diaphragm actuator	-22°F up to +392°F, opt. -22°F up to +428°F
Ambient temperature**	digital positioner +14°F up to +167°F analog positioner -5°F up to +140°C

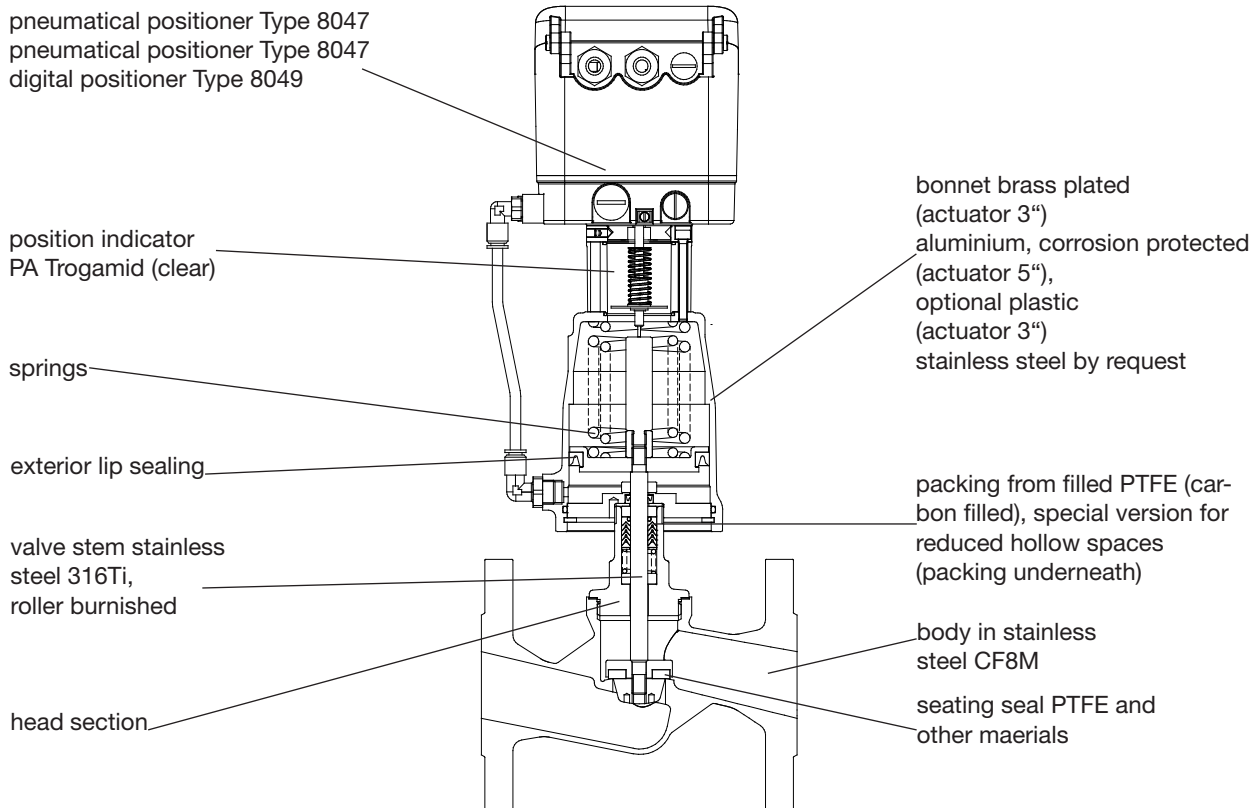
*: Please consider further temperature versions and limits in technical bulletin 32

** : Please consider the limitation of use of the positioner



Options

- e. g.:
- Optical position indicator
 - External i/p-converter Type 8045
 - Ex-i/p-Stellungsregler (Ex II 2 G EEx ib IIC T6)
 - inductive limit switches



Flanged Control Valve 7037, standard with integrated positioner



Materials

Body	Stainless steel CF8M
Seating seal	PTFE
Bonnet	Brass chrome plated (actuator Ø 3") Aluminium corrosion protected (actuator Ø 5")
Diaphragm actuator	Stainless steel ASTM A313 304
Actuator springs	Stainless steel ASTM A313 302 (actuator Ø 3", diaph. act.) Spring steel wire C, zinc coated (actuator Ø 5")
Packing	PTFE (carbon filled), spring ASTM A313 302
Valve stem	Stainless steel 316 Ti, roller burnished
Position indicator	PA Trogamid (clear)

Positioner

For technical information of our positioners please refer to the corresponding data sheets.

Admissible Differential Pressures

digital positioner

Size	Differential pressure	Supply pressure range	Piston Ø	Spring configuration
	psi	psi	inch	Number
1/2"	250	60 - 90	3"	2 *
3/4"	250	60 - 90	3"	2
1"	250	60 - 90	3"	1
1 1/4"	145	60 - 90	3"	1
1 1/4"	250	45 - 90	5"	2
1 1/2"	85	60 - 90	3"	1
1 1/2"	250	60 - 90	5"	3
1 1/2"	250	45 - 90	10"	6

* special springs

p/p- and i/p-positioner

Size	Differential Pressure	Supply pressure range	Piston Ø	Spring configuration
	psi	psi	inch	Number
1/2"	250	60 - 90	3"	2
3/4"	250	60 - 90	3"	2
1"	175	60 - 90	3"	1
1 1/4"	100	60 - 90	3"	1
1 1/4"	190	45 - 90	5"	2
1 1/2"	60	60 - 90	3"	1
1 1/2"	160	60 - 90	5"	3

* special springs

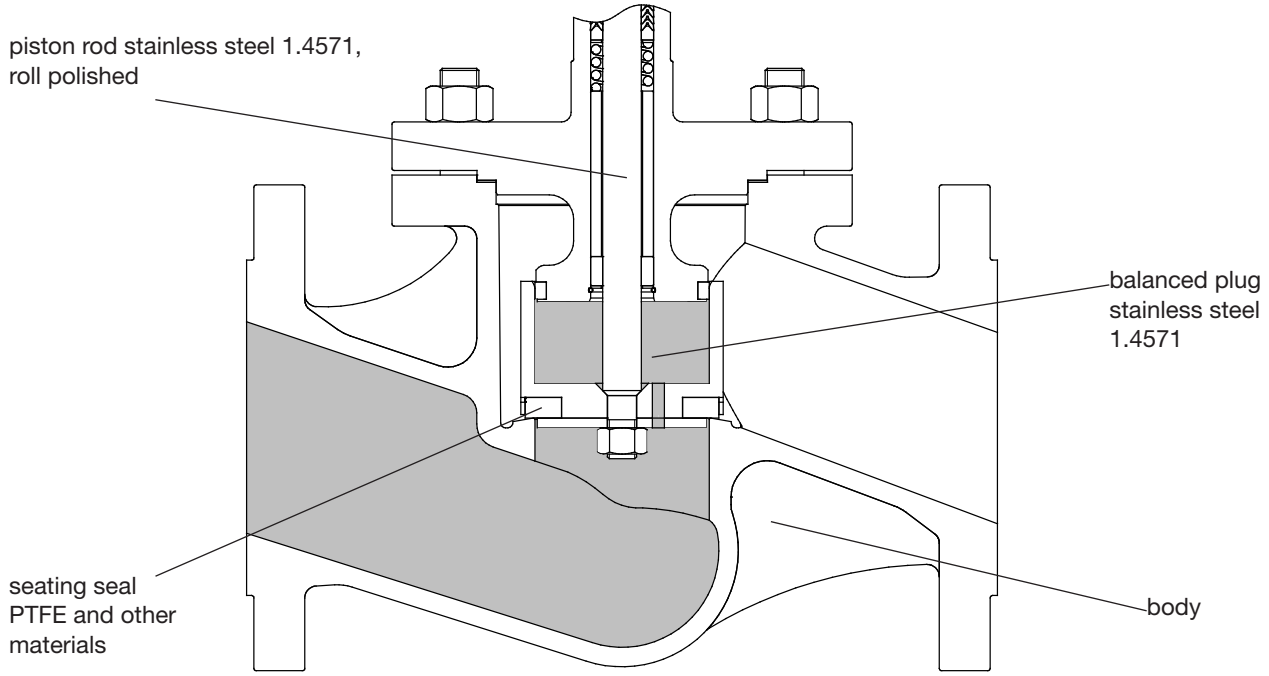
diaphragm actuator direct pressure range

Size	Maximum pressure (psi)		Supply air (psi)		Dia- phragm area inch
	spring range		spring range		
	3 - 15 psi	6 - 29 psi	3 - 15 psi	6 - 29 psi	
1/2"	235	235	20	35	10"
3/4"	235	235	20	35	10"
1"	130	235	20	35	10"
1 1/4"	75	220	20	35	10"
1 1/2"	45	145	20	35	10"
2"	30	90	20	35	10"

Flanged Control Valve 7037

pressure relased design with integrated positioner

Admissible Differential Pressures



digital positioner

Size	Max. pressure (psi)		Supply pressure range psi	Piston Ø inch	Spring configuration Number
	PTFE	PEEK			
2 1/2"	230	230	61 - 90	10"	3
2 1/2"	230	230	22 - 90	10"	4
3"	230	230	63 - 90	10"	3
3"	230	230	22 - 90	10"	4

p/p- and i/p-positioner

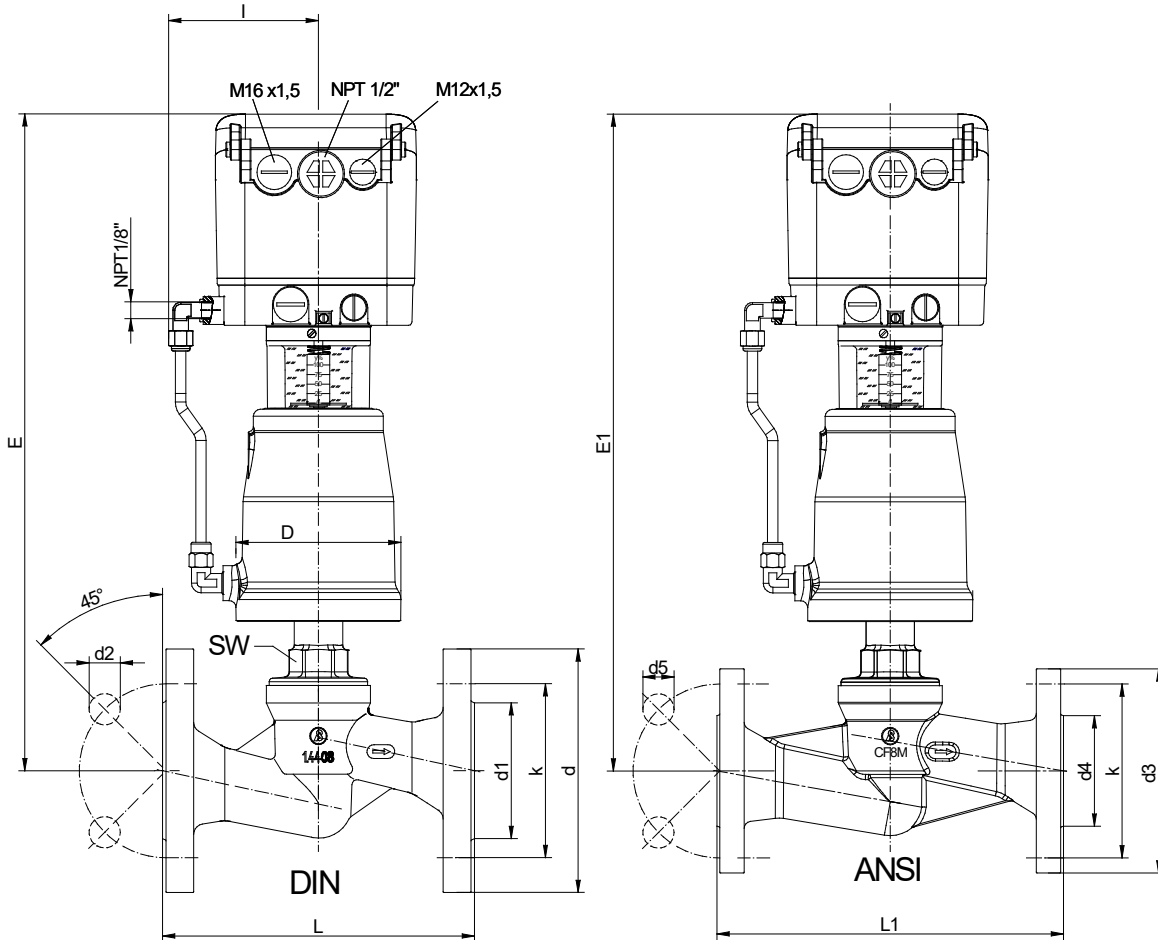
Size	Max. pressure (psi)		Supply pressure range psi	Piston Ø inch	Spring configuration Number
	PTFE	PEEK			
2 1/2"	230	230	61 - 90	10"	3
3"	230	230	63 - 90	10"	3

Flanged Control Valve 7037, standard



with integrated positioner

Dimensions and Weights 1/2" up to 1 1/2"



**7037 with digital positioner
Type 8049**

Nominal size	Actuator	L	L1	D	d	d1	d2	d3	d4	d5	k	k1	E	E1	G	I	SW	Weight [lbs]
1/2"	3"	5.12	7.24	3.86	3.74	1.77	0.55	3.5	1.38	0.62	2.56	2.38	13.89	13.89	1/4"	2.17	1.18	12.35
3/4"	3"	5.91	7.24	3.86	4.13	2.28	0.55	3.88	1.69	0.62	2.95	2.75	14.07	14.07	1/4"	2.17	1.18	14.33
1"	3"	6.3	7.24	3.86	4.53	2.68	0.55	4.25	2	0.62	3.35	3.12	14.74	14.74	1/4"	2.17	1.18	15.43
1 1/4"	3"	7.09	7.87	3.86	5.51	3.07	0.71	4.62	2.5	0.62	3.94	3.5	14.9	14.9	1/4"	2.17	1.18	21.61
1 1/4"	5"	7.09	7.87	5.67	5.51	3.07	0.71	4.62	2.5	0.62	3.94	3.5	15.7	15.7	1/4"	2.17	1.18	25.57
1 1/2"	3"	7.87	8.74	3.86	5.91	3.46	0.71	5	2.88	0.62	4.33	3.88	15.13	15.13	1/4"	2.17	1.18	23.15
1 1/2"	5"	7.87	8.74	5.67	5.91	3.46	0.71	5	2.88	0.62	4.33	3.88	15.94	15.94	1/4"	2.17	1.18	27.1
2"	3"	9.06	10	3.86	6.5	4.13	0.71	6.02	3.62	0.75	4.92	4.75	16.34	16.34	1/4"	2.17	1.18	26.9
2"	5"	9.06	10	5.67	6.5	4.13	0.71	6.02	3.62	0.75	4.92	4.75	16.77	16.77	1/4"	2.17	1.18	33

*Reinforced version

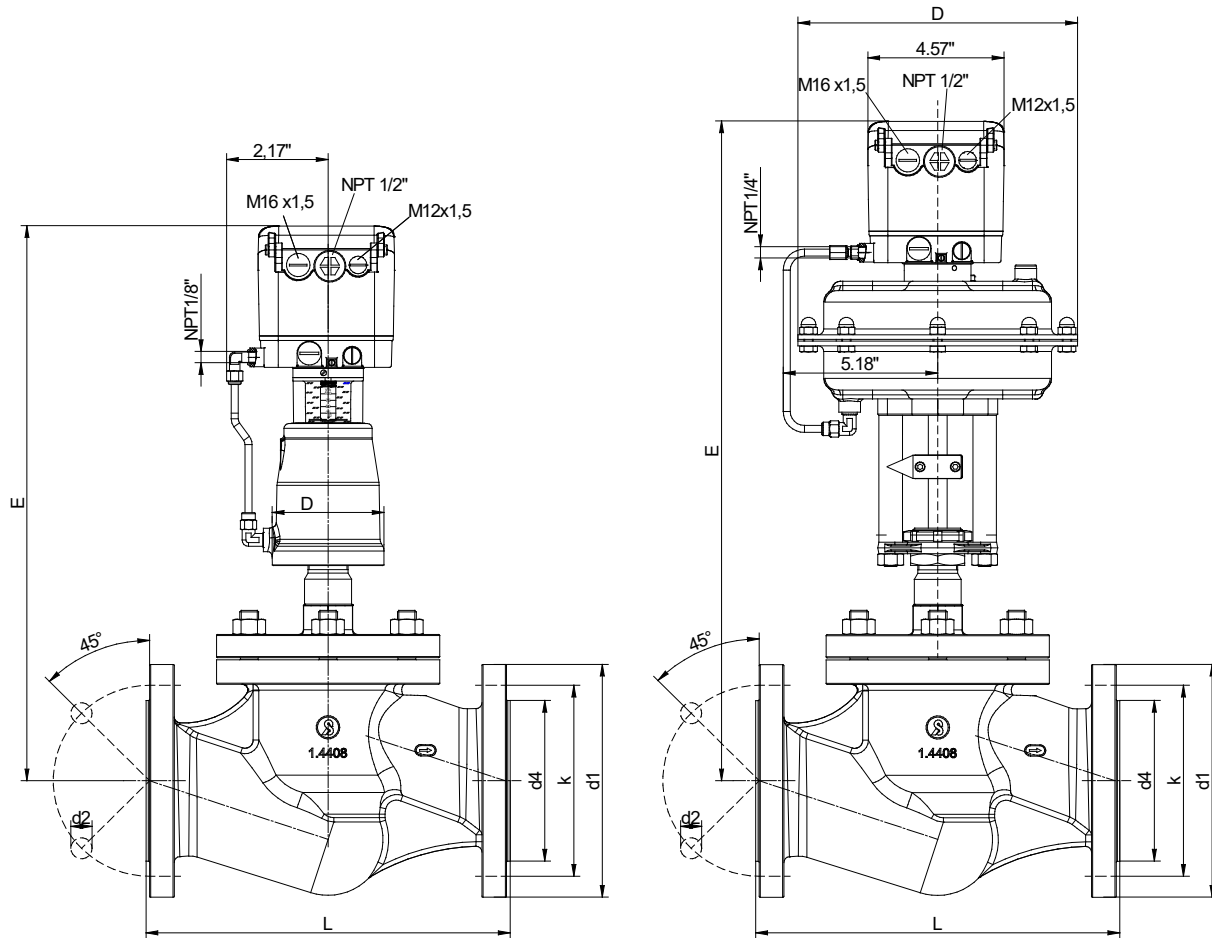
Dimensions in inch

Flanged Control Valve 7037



piston actuator with integrated positioner

Dimensions and Weights 2 1/2" and 3"



Nominal size	Actuator	L	D	d1	d2	d4	k	E	G	Weight [lbs]
2 1/2"	10"	11.42	3.78	7.28	0.71	4.8	5.71	18.39	G1/4"	57.32
2 1/2"	10"	11.42	5.75	7.28	0.71	4.8	5.71	19.37	G1/4"	61.73
2 1/2"	10"	11.42	9.37	7.28	0.71	4.8	5.71	21.93	G1/4"	72.75
3"	10"	12.2	3.78	7.87	0.71	5.43	6.3	18.78	G1/4"	72.75
3"	10"	12.2	5.75	7.87	0.71	5.43	6.3	19.76	G1/4"	77
3"	10"	12.2	9.37	7.87	0.71	5.43	6.3	22.36	G1/4"	86

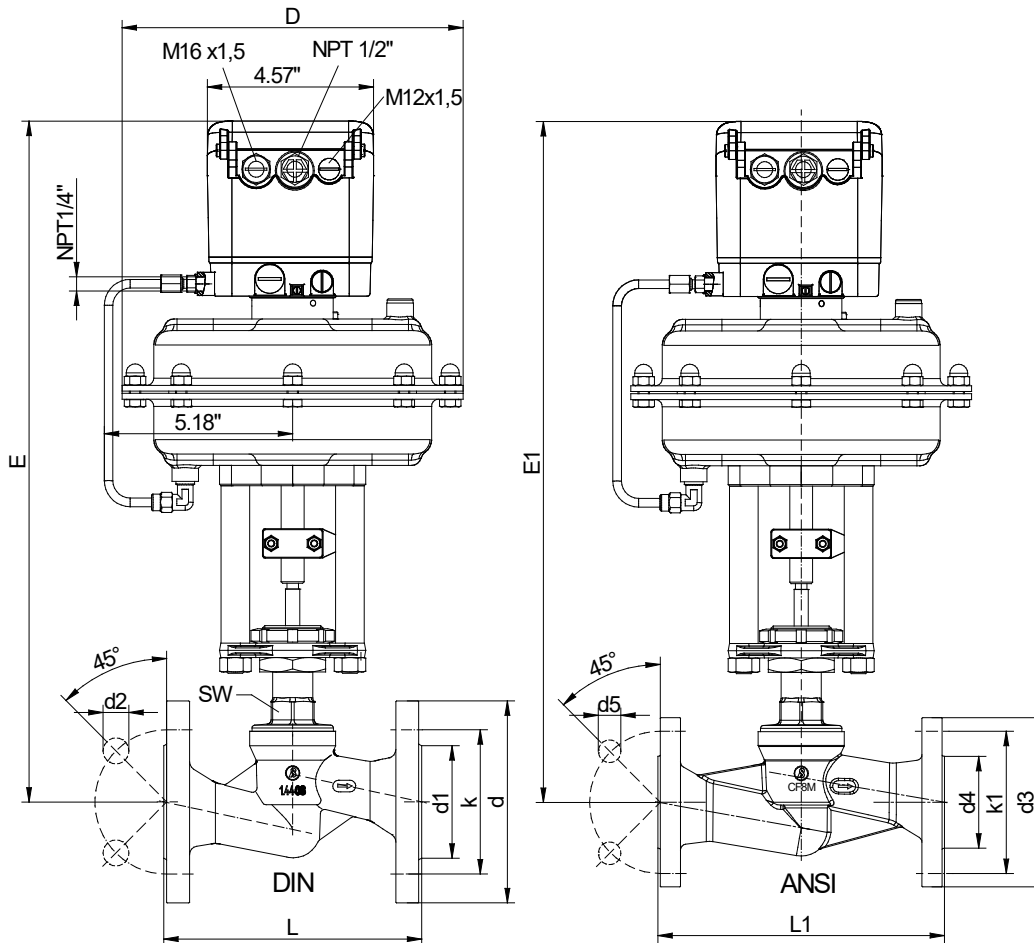
Dimensions in inch

Flanged Control Valve 7037, standard



with integrated positioner

Dimensions and Weights



7037 with digital positioner
Type 8049

Nominal size	Actuator	L	L1	D	d	d1	d2	d3	d4	d5	k	k1	E	E1	G	SW	Weight [lbs]
1/2"	10"	5.12	7.24	9.37	3.74	1.77	0.55	3.5	1.38	0.62	2.56	2.38	17.56	17.6	1/4"	1.18	26.5
3/4"	10"	5.91	7.24	9.37	4.13	2.28	0.55	3.88	1.69	0.62	2.95	2.75	17.74	17.74	1/4"	1.18	27.5
1"	10"	6.3	7.24	9.37	4.53	2.68	0.55	4.25	2	0.62	3.35	3.12	18.41	18.41	1/4"	1.18	28.7
1 1/4"	10"	7.09	7.87	9.37	5.51	3.07	0.71	4.62	2.5	0.62	3.94	3.5	18.57	18.56	1/4"	1.18	35.3
1 1/2"	10"	7.87	8.74	9.37	5.91	3.46	0.71	5	2.88	0.62	4.33	3.88	18.8	18.8	1/4"	1.42	36.4
2" *	10"	9.06	10	9.37	6.5	4.02	0.71	6	3.62	0.75	4.92	4.75	20.01	19.74	1/4"	1.42	49.4
2 1/2" **	10"	11.42	-	9.37	7.28	4.8	0.71	-	-	-	5.71	-	21.89	-	1/4"	1.46	73.8
3" **	10"	12.2	-	9.37	7.87	5.43	0.71	-	-	-	6.3	-	22.36	-	1/4"	1.5	86

*reinforced version

Dimensions in inch

Text and pictures are not binding. We reserve the right to alter the equipment.