

Flanged Control Valve 7036

with integrated positioner

1/2" up to 3"

Pneumatically operated control valve with integrated positioner for the control of neutral, slightly aggressive and highly aggressive media. Ideal for steam, gases and liquids.

- Unaffected by lightly contaminated media
- Body completely stainless steel
- PTFE plug seal
- ANSI class VI shutoff
- Integrated positioner
 - pneumatic
 - electro-pneumatic
 - digital
- Working pressure up to 580 psi
- For temperatures from -22°F up to +428°F



Technical Information

Nominal size	1/2" up to 3", 235 psi
Connections	flange acc. ANSI #150 flange acc. ANSI #300
Nominal pressure	ANSI #150 / ANSI #300
Max. fluid temperature:	
with metal bonnet	-22°F up to +392°F, opt. -148°F up to +428°F
with plastic bonnet	-22°F up to +275°F
with diaphragm actuator	-22°F up to +392°F, opt. -22°F up to +428°F
Ambient temperature	analog positioner: +5°F up to +140°F digital positioner: +14°F up to +167°F
Viscosity of the fluid	maximum 600 mm ² /s (600cSt, 80°E)
Vacuum	maximum 0.0295 mercury (Hg)
Working pressure for packing underneath	maximum 174 psi
Body dimension	L acc. DIN EN 558-92 (old: DIN 3202-F3)

*: Please consider further temperature versions and limits in technical bulletin 32

Materials

Body	Stainless steel CF8M
Bonnet	Brass chrome plated (actuator Ø 3") Aluminium corrosion protected (actuator Ø 5")
Diaphragm actuator	Stainless steel ASTM A313 304
Actuator springs	Stainless steel ASTM A313 302 (actuator Ø 3", diaph. act.) Spring steel wire C, zinc coated (actuator Ø 5")
Packing	PTFE (carbon filled), spring ASTM A313 302
Valve stem	Stainless steel 316 Ti, roller burnished
Position indicator	PA Trogamid (clear)

Positioner

For technical information of our positioners please refer to the corresponding data sheets.

Cv-Value

Size	Linear					Equal percentage				
	1/2"	3/4"	1"	1 1/4"	1 1/2"	1/2"	3/4"	1"	1 1/4"	1 1/2"
100 %	4.4	10.2	16.2	23.2	31.3	3.5	7	11.6	18.6	29
40 %	1.7	4.1	6.7	9.3	12.8	1.4	2.8	4.6	7	11.6
25 %	1.1	2.6	4.2	-	-	0.9	1.7	3	-	-
15%	-	-	-	-	-	0.5	-	-	-	-
10%	0.5	-	-	-	-	-	-	-	-	-
7,5%	-	-	-	-	-	0.3	-	-	-	-

Admissible Pressures

digital positioner

Size	Pressure	Supply pressure range	Piston Ø	Spring configuration
	psi	psi	inch	Number
1/2"	250	60 - 90	3"	2
3/4"	250	60 - 90	3"	2
1"	250	60 - 90	3"	1
1 1/4"	145	60 - 90	3"	1
1 1/4"	250	45 - 90	5"	2
1 1/2"	85	60 - 90	3"	1
1 1/2"	250	60 - 90	5"	3

p/p-positioner i/p-positioner

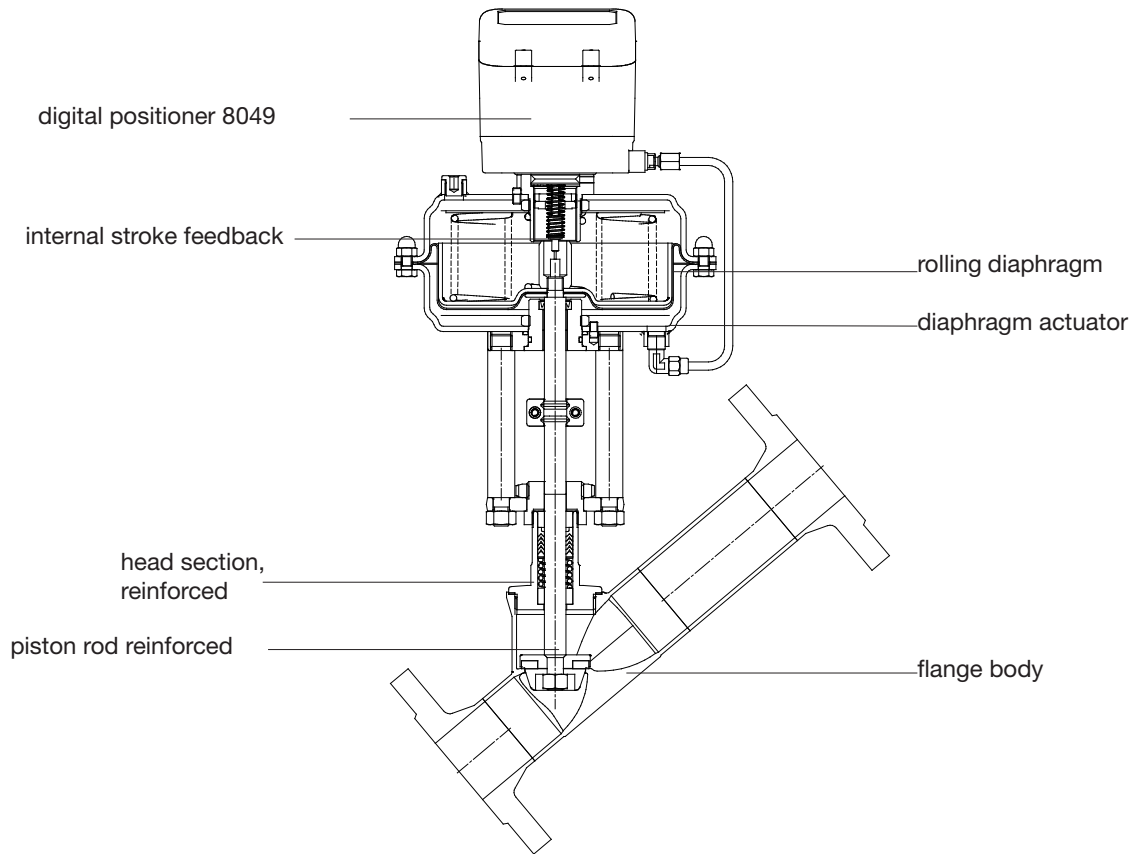
Size	Differential pressure	Pilot pressure	Piston Ø	Springs
	bar	bar	mm	Number
1/2"	250	60 - 90	3"	2
3/4"	250	60 - 90	3"	2
1"	175	60 - 90	3"	1
1 1/4"	100	60 - 90	3"	1
1 1/4"	190	45 - 90	5"	2
1 1/2"	60	60 - 90	3"	1
1 1/2"	160	60 - 90	5"	3

diaphragm actuator, direct pressure range

Size	Maximum pressure (psi)		Supply air (psi)		Diaphragm area inch
	spring range		spring range		
	3 - 15 psi	6 - 29 psi	3 - 15 psi	6 - 29 psi	
1/2"	250	250	17	35	10"
3/4"	250	250	17	35	10"
1"	130	250	17	35	10"
1 1/4"	75	220	17	35	10"
1 1/2"	45	145	17	35	10"
2"	30	85	17	35	10"

Flanged Control Valve 7036

reinforced design



Admissible Pressures

digital positioner

Size	Max. pressure (psi)		Supply pressure range psi	Piston Ø inch	Springs Number
	PTFE	PEEK			
2"	45	-	60 - 90	3"	1
2"	160	60	60 - 90	5"	3
2"	175	75	45 - 90	10"	6
2"	250	145	60 - 90	10"	8 *
2"	250	250	60 - 90	10"	12
2 1/2"	75	-	60 - 90	5"	3
2 1/2"	190	115	60 - 90	10"	12
3"	45	-	60 - 90	5"	3
3"	130	75	60 - 90	10"	12

p/p-positioner i/p-positioner

Size	Differential pressure (psi)	Supply pressure range psi	Piston Ø inch	Springs number
	PTFE			
2"	30	60 - 90	3"	1
2"	85	60 - 90	5"	3
2"	190	60 - 90	10"	10
2"	245	60 - 90	10"	12 *
2 1/2"	135	60 - 90	10"	12
3"	90	60 - 90	10"	12

* spring configuration, standard

Cv-Value

Size	linear			equal percentage		
	2"	2 1/2"	3"	2"	2 1/2"	3"
100%	49.9	60.3	80	39.4	51	68.4
63%	30.2	37.1	-	26.7	33.6	-

Angle Seat Control Valve 7036

with integrated positioner pressure balanced design

DN50 up to DN80, PN40

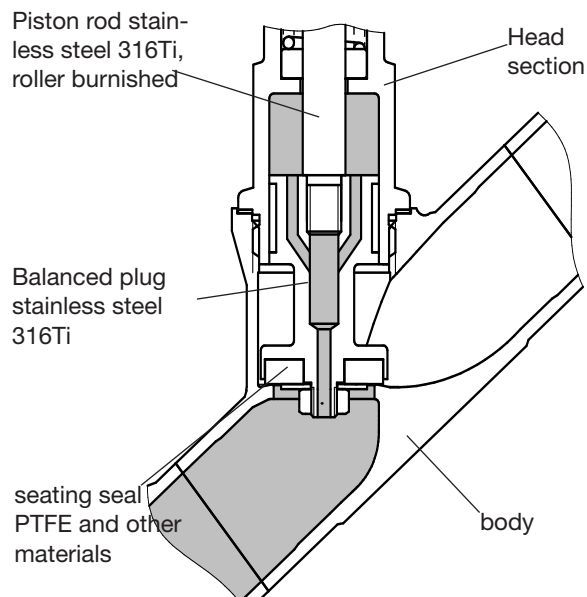
Admissible Differential Pressures

digital positioner

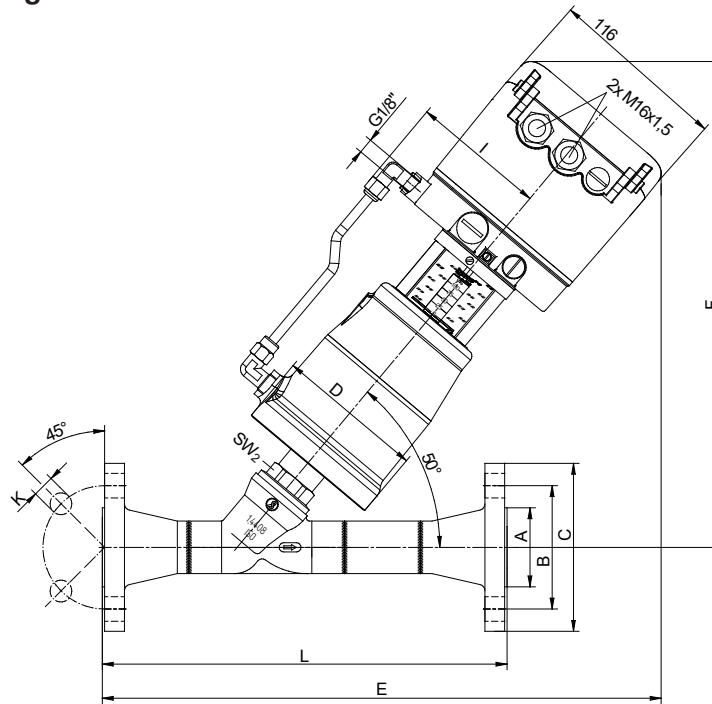
Size	Pressure (PTFE)	Supply pressure range	Piston Ø	Spring configuration
	psi	psi	inch	Number
2"	250	60 - 90	5"	3
2 1/2"	250	60 - 90	5"	3
3"	250	60 - 90	5"	3

p/p- and i/p-positioner

Size	Differential pressure (PTFE)	Supply pressure range	Piston Ø	Springs
	psi	psi	inch	number
2"	250	60 - 90	5"	3
2 1/2"	250	60 - 90	5"	3
3"	250	60 - 90	5"	3



Dimensions and Weights



digital positioner Type 8049

PN40

Size	Actuator	I	A	B	C	D	K	Number of borings	L	E	F	SW2	Weight (lbs)
1/2"	3"	3.15	1.77	2.56	3.74	3.86	0.55	4	9.06	13.78	12.01	1.18	13.23
3/4"	3"	3.15	2.28	2.95	4.13	3.86	0.55	4	10.24	13.98	12.2	1.18	14.99
1"	3"	3.15	2.68	3.35	4.53	3.86	0.55	4	10.24	14.17	12.4	1.18	16.53
1 1/4"	3"	3.15	3.07	3.94	5.51	3.86	0.71	4	11.81	14.76	12.4	1.18	19.18
1 1/4"	5"	4.13	3.07	3.94	5.51	5.75	0.71	4	11.81	15.94	13.58	1.18	25.57
1 1/2"	3"	3.15	3.46	4.33	5.91	3.86	0.71	4	11.81	14.96	12.6	1.18	21.61
1 1/2"	5"	4.13	3.46	4.33	5.91	5.75	0.71	4	11.81	16.14	13.78	1.18	27.34

reinforced design:

Size	Actuator	I	A	B	C	D	K	Number of borings	L	E	F	SW2	pressure balanced			Weight (lbs)
													E	F	SW2	
2"	3"	3.15	4.02	4.92	6.5	3.86	0.71	4	13.78	15.55	13.58	1.26	-	-	-	26.01
2"	5"	4.13	4.02	4.92	6.5	5.75	0.71	4	13.78	16.73	14.76	1.26	-	-	-	31.75
2 1/2"	5"	4.13	4.8	5.71	7.28	5.75	0.71	8	15.75	17.91	14.96	1.61	-	-	-	38.36
3"	5"	4.13	5.43	6.3	7.87	5.75	0.71	8	17.72	19.69	14.76	1.61	-	-	-	43.21

ASME B16.5 150 lbs

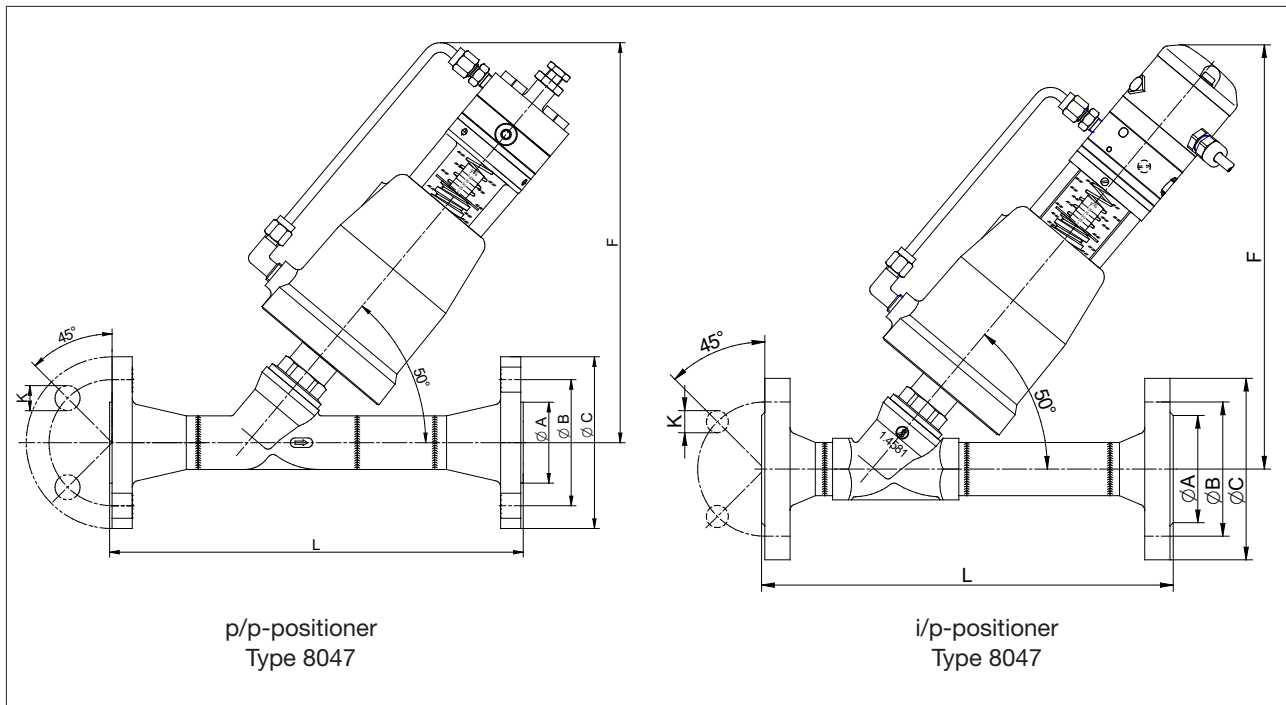
Size	Actuator	I	A	B	C	D	K	Number of borings	L	E	F	SW2	Weight (lbs)
1/2"	3"	3.15	1.37	2.37	3.54	3.86	0.62	4	9.06	13.78	12.01	1.18	13.23
3/4"	3"	3.15	1.69	2.75	3.94	3.86	0.62	4	10.24	13.98	12.2	1.18	14.99
1"	3"	3.15	2	3.13	4.33	3.86	0.62	4	10.24	14.17	12.4	1.18	16.53
1 1/4"	3"	3.15	2.5	3.5	4.53	3.86	0.62	4	11.81	14.76	12.4	1.18	19.18
1 1/4"	5"	4.13	2.5	3.5	4.53	5.75	0.62	4	11.81	15.94	13.58	1.18	25.57
1 1/2"	3"	3.15	2.87	3.88	4.92	3.86	0.62	4	11.81	14.96	12.6	1.18	21.61
1 1/2"	5"	4.13	2.87	3.88	4.92	5.75	0.62	4	11.81	16.14	13.78	1.18	27.34

reinforced design:

Size	Actuator	I	A	B	C	D	K	Number of borings	L	E	F	SW2	pressure balanced			Weight (lbs)
													E	F	SW2	
2"	3"	3.15	3.63	4.75	5.91	3.86	0.75	4	13.78	15.55	13.58	1.26	-	-	-	26.01
2"	5"	4.13	3.63	4.75	5.91	5.75	0.75	4	13.78	16.73	14.76	1.26	-	-	-	31.75
2 1/2"	5"	4.13	4.13	5.5	7.09	5.75	0.75	4	15.75	17.91	14.96	1.61	-	-	-	38.36
3"	5"	4.13	5	6	7.48	5.75	0.75	4	17.72	19.69	14.76	1.61	-	-	-	43.21

Dimensions in inch

Dimensions and Weights



p/p-positioner
Type 8047

i/p-positioner
Type 8047

ASME B16.5 150 lbs

Size	Actuator	A	B	C	D	K	Number of borings	L	F		H stroke	Weight (lbs)	
									p/p	i/p		p/p	i/p
1/2"	3"	1.37	2.37	3.54	3.86	0.62	4	9.06	9.65	10.24	0.28	11.68	12.35
3/4"	3"	1.69	2.75	3.94	3.86	0.62	4	10.24	9.65	10.24	0.47	13.45	14.11
1"	3"	2	3.13	4.33	3.86	0.62	4	10.24	10.04	10.63	0.63	14.99	15.65
1 1/4"	3"	2.5	3.5	4.53	3.86	0.62	4	11.81	10.63	11.22	0.79	18.52	18.96
1 1/4"	5"	2.5	3.5	4.53	5.75	0.62	4	11.81	11.81	12.4	0.79	24.03	24.69
1 1/2"	3"	2.87	3.88	4.92	3.86	0.62	4	11.81	10.83	11.42	0.91	20.06	20.72
1 1/2"	5"	2.87	3.88	4.92	5.75	0.62	4	11.81	12.01	12.6	0.91	25.79	26.46

reinforced design:

Size	Actuator	A	B	C	D	K	Number of borings	L	F		H stroke	F		Weight (lbs)	
									p/p	i/p		pressure balanced	p/p	i/p	
											p/p				i/p
2"	3"	3.63	4.75	5.91	3.86	0.75	4	13.78	11.02	11.61	1.14	-	-	24.47	25.13
2"	5"	3.63	4.75	5.91	5.75	0.75	4	13.78	12.2	12.8	1.14	12.4	13.58	30.2	30.86
2 1/2"	5"	4.13	5.5	7.09	5.75	0.75	4	15.75	12.01	13.19	1.14	12.8	13.98	36.82	37.48
3"	5"	5	6	7.48	5.75	0.75	4	17.72	11.61	13.19	1.14	13.78	14.96	41.67	42.33

PN40

Size	Actuator	A	B	C	D	K	Number of borings	L	F		H stroke	Weight (lbs)	
									p/p	i/p		p/p	i/p
1/2"	3"	1.77	2.56	3.74	3.86	0.55	4	9.06	9.65	10.24	0.28	11.68	12.35
3/4"	3"	2.28	2.95	4.13	3.86	0.55	4	10.24	9.65	10.24	0.47	13.45	14.11
1"	3"	2.68	3.35	4.53	3.86	0.55	4	10.24	10.04	10.63	0.63	14.99	15.65
1 1/4"	3"	3.07	3.94	5.51	3.86	0.71	4	11.81	10.63	11.22	0.79	18.52	18.96
1 1/4"	5"	3.07	3.94	5.51	5.75	0.71	4	11.81	11.81	12.4	0.79	24.03	24.69
1 1/2"	3"	3.46	4.33	5.91	3.86	0.71	4	11.81	10.83	11.42	0.91	20.06	20.72
1 1/2"	5"	3.46	4.33	5.91	5.75	0.71	4	11.81	12.01	12.6	0.91	25.79	26.46

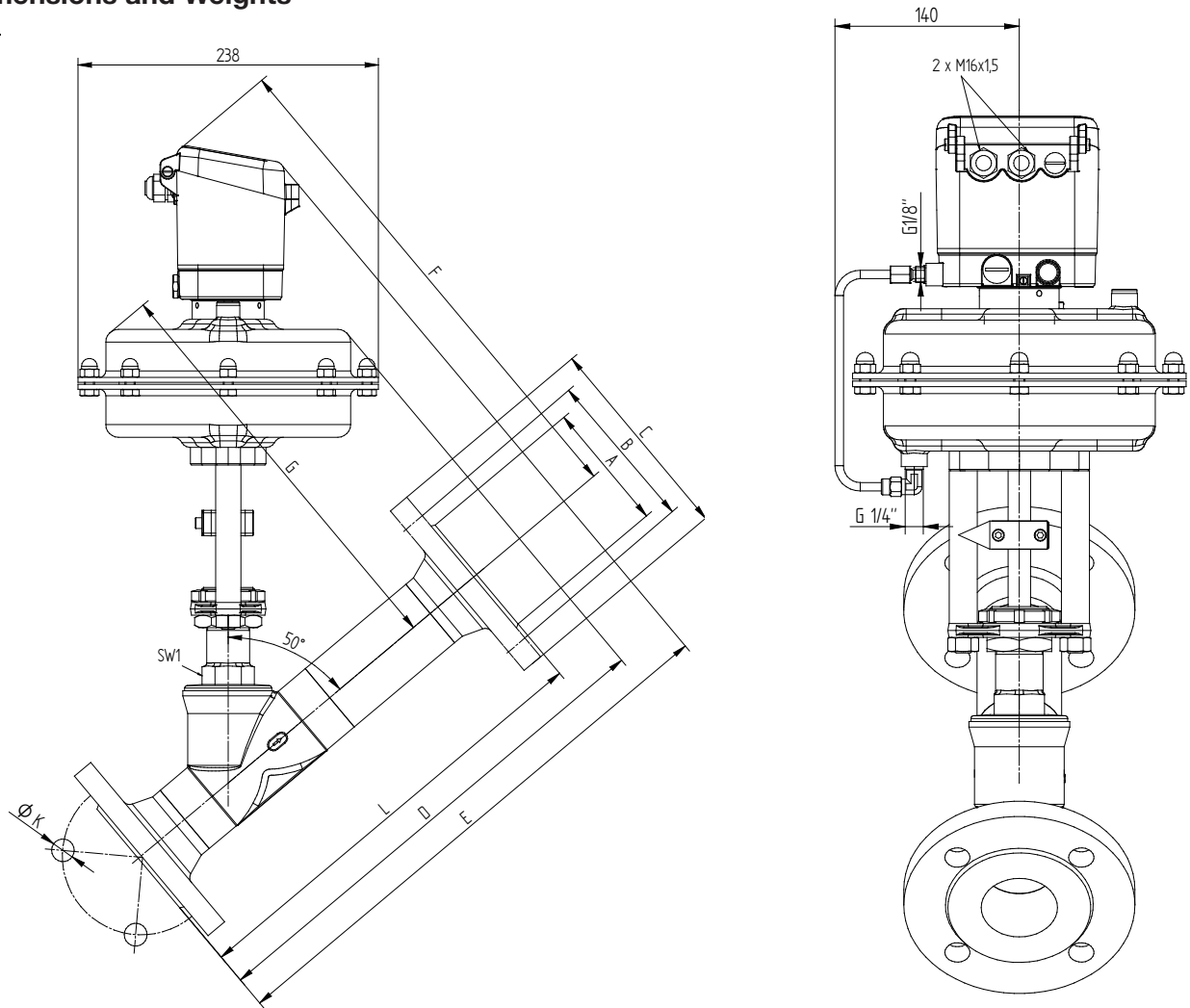
reinforced design:

Size	Actuator	A	B	C	D	K	Number of borings	L	F		H stroke	F		Weight (lbs)	
									p/p	i/p		pressure balanced	p/p	i/p	
											p/p				i/p
2"	3"	4.02	4.92	6.5	3.86	0.71	4	13.78	11.02	11.61	1.14	-	-	24.47	25.13
2"	5"	4.02	4.92	6.5	5.75	0.71	4	13.78	12.2	12.8	1.14	12.4	13.58	30.2	30.86
2 1/2"	5"	4.8	5.71	7.28	5.75	0.71	8	15.75	12.01	13.19	1.14	12.8	13.98	36.82	37.48
3"	5"	5.43	6.3	7.87	5.75	0.71	8	17.72	11.61	13.19	1.14	13.78	14.96	41.67	42.33

Flanged Control Valve 7036

reinforced design

Dimensions and Weights



Membrantrieb mit Stellungsregler 8049

ANSI150

DN	A	B	C	D	K	number of	L	D	G	E	F	SW1	Weight (kg)
						borings							
1/2"	1.38	2.38	3.5	3.86	0.62	4	9.06	12.99	11.02	15.16	13.78	1.18	41.23
3/4"	1.69	2.75	3.88	3.86	0.62	4	10.24	13.39	11.42	15.55	14.17	1.18	41.45
1"	2	3.12	4.25	3.86	0.62	4	10.24	13.58	11.81	15.75	14.57	1.18	41.89
1 1/4"	2.5	3.5	4.62	5.75	0.62	4	11.81	14.17	12.2	16.34	15.16	1.18	42.11
1 1/2"	2.88	3.88	5	5.75	0.62	4	11.81	14.57	12.6	16.73	15.55	1.18	42.55
2"	3.62	4.75	6	5.75	0.75	4	13.78	15.75	13.19	17.72	15.16	1.42	43.21
2 1/2"	4.23	5.49	7	5.75	0.75	4	15.75	16.54	13.78	19.29	15.75	1.42	44.09
3"	5	6	7.5	5.75	0.75	4	17.72	18.5	13.66	21.06	16.34	1.61	50.71

PN40

DN	A	B	C	D	K	number of	L	D	G	E	F	SW1	Weight (kg)
						borings							
1/2"	1.77	2.56	3.74	3.86	0.55	4	9.06	12.99	11.02	15.16	13.78	1.18	41.23
3/4"	2.28	2.95	4.13	3.86	0.55	4	10.24	13.39	11.42	15.55	14.17	1.18	41.45
1"	2.68	3.35	4.53	3.86	0.55	4	10.24	13.58	11.81	15.75	14.57	1.18	41.89
1 1/4"	3.07	3.94	5.51	5.75	0.71	4	11.81	14.17	12.2	16.34	15.16	1.18	42.11
1 1/2"	3.46	4.33	5.91	5.75	0.71	4	11.81	14.57	12.6	16.73	15.55	1.18	42.55
2"	4.02	4.92	6.5	5.75	0.71	4	13.78	15.75	13.19	17.52	15.16	1.42	43.21
2 1/2"	4.8	5.71	7.28	5.75	0.71	8	15.75	16.54	13.78	18.31	15.75	1.42	44.09
3"	5.43	6.3	7.87	5.75	0.71	8	17.72	18.5	13.66	20.87	16.34	1.61	50.71

Dimensions in inch

Text and pictures are not binding. We reserve the right, to alter the equipment.