

# Flanged Control Valve

## 1/2" up to 2"

# 7036



**Pneumatically operated control valve with integrated positioner for the control of neutral, slightly aggressive and highly aggressive media. Ideal for steam, gases and liquids.**

- Unaffected by lightly contaminated media
- Body completely stainless steel
- PTFE plug seal
- ANSI class VI shutoff
- Integrated positioner
  - pneumatic
  - electro-pneumatic
  - digital
- Working pressure up to 580 psi



### Positioner

	Digital positioner Type 8048	i/p-positioner Type 8047	p/p-positioner Type 8047
Input signal range	0/4 - 20 mA, 0/2 - 10 V	0/4 - 20 mA, 0/2 - 10 V	0,2 - 1 bar
Supply voltage, electrical	24 V DC, maximum 10 W	none	none
Supply air pressure	max. 87 psi	max. 87 psi	max. 87 psi
Hysteresis	< 0,5 %	< 1 %	< 1 %
Rangeability	30 : 1	25 : 1	25 : 1
Characteristics	linear, equal percentage, user-defined, process optimized*	Characteristics of function unit	Characteristics of function unit
Adjustment (Stroke, zero point)	self-adapting	mechanical	mechanical
Ambient temperature	-4°F up to +167°F	-4°F up to +140°F	-4°F up to +176°F
Protection class acc. DIN 40050	IP65	IP 54	IP 54
Ex-proof (Optional)	-	Ex II 2 G EEx ib IIC T6 up to 113°F Ex II 2 G EEx ib IIC T5 up to 140°F	-

\*Produces a linear process flow characteristic for optimal control. After entering a few process data points (e.g. upstream and downstream pressures) the optimised flow characteristic is calculated by the positioner configuration software and stored in the positioner memory.

# Flanged Control Valve 7036

## with integrated positioner



### Digital Positioner Type 8049

Version	4-wire	2-wire	AS-I
Set point signal	0/4 - 20 mA	4 - 20 mA	Single Slave, Slave Profil S - 7.3.4
Burden voltage	1,2 V	14 V	-
Supply energy, electrical	24 VDC	none	supply with AS-I
Adaption to range and zero	self-calibrating		
Configuration	with PC-Software		
Air capacity* to actuator	1.75 SCFM	varies with design	1.75 SCFM
System air consumption	none		
Ambient temperature limits	-4 to +167°F	-14 to +167°F	-4 to +167°F
Supply connection	NPT 1/8"		
Class of protection	IP 65		
Accessories	Analogue feedback module RM-1 2 wire design, feedback signal 4 - 20 mA		

\*90 psi supply air

### Cv-Value

DN	Linear						Equal percentage					
	1/2"	3/4"	1"	1 1/4"	1 1/2"	2"	1/2"	3/4"	1"	1 1/4"	1 1/2"	2"
100 %	4.4	10.2	16.2	23.2	31.3	47.6	3.5	7	11.6	18.6	29	-
40 %	1.7	4.1	6.7	9.3	12.8	-	1.4	2.8	4.6	7	11.6	-
25 %	1.1	2.6	4.2	-	-	-	0.9	1.7	3	-	-	-
15%	-	-	-	-	-	-	0.5	-	-	-	-	-
10%	0.5	-	-	-	-	-	-	-	-	-	-	-
7,5%	-	-	-	-	-	-	0.3	-	-	-	-	-

### Admissible Pressures

#### digital positioner

DN	Pressure	Supply pressure range	Piston Ø	Spring configuration
	psi	psi	inch	Number
1/2"	235	60 - 90	3"	2
3/4"	235	60 - 90	3"	2
1"	235	60 - 90	3"	1
1 1/4"	145	60 - 90	3"	1
1 1/4"	235	45 - 90	5"	2
1 1/2"	85	60 - 90	3"	1
1 1/2"	235	60 - 90	5"	3
2"	45	60 - 90	3"	1
2"	130	60 - 90	5"	3

#### p/p-positioner i/p-positioner

DN	Pressure	Supply pressure Range	Piston Ø	Spring Configuration
	psi	psi	inch	Number
1/2"	235	60 - 90	3"	2
3/4"	235	60 - 90	3"	2
1"	175	60 - 90	3"	1
1 1/4"	100	60 - 90	3"	1
1 1/4"	190	45 - 90	5"	2
1 1/2"	60	60 - 90	3"	1
1 1/2"	160	60 - 90	5"	3
2"	30	60 - 90	3"	1
2"	85	60 - 90	5"	3

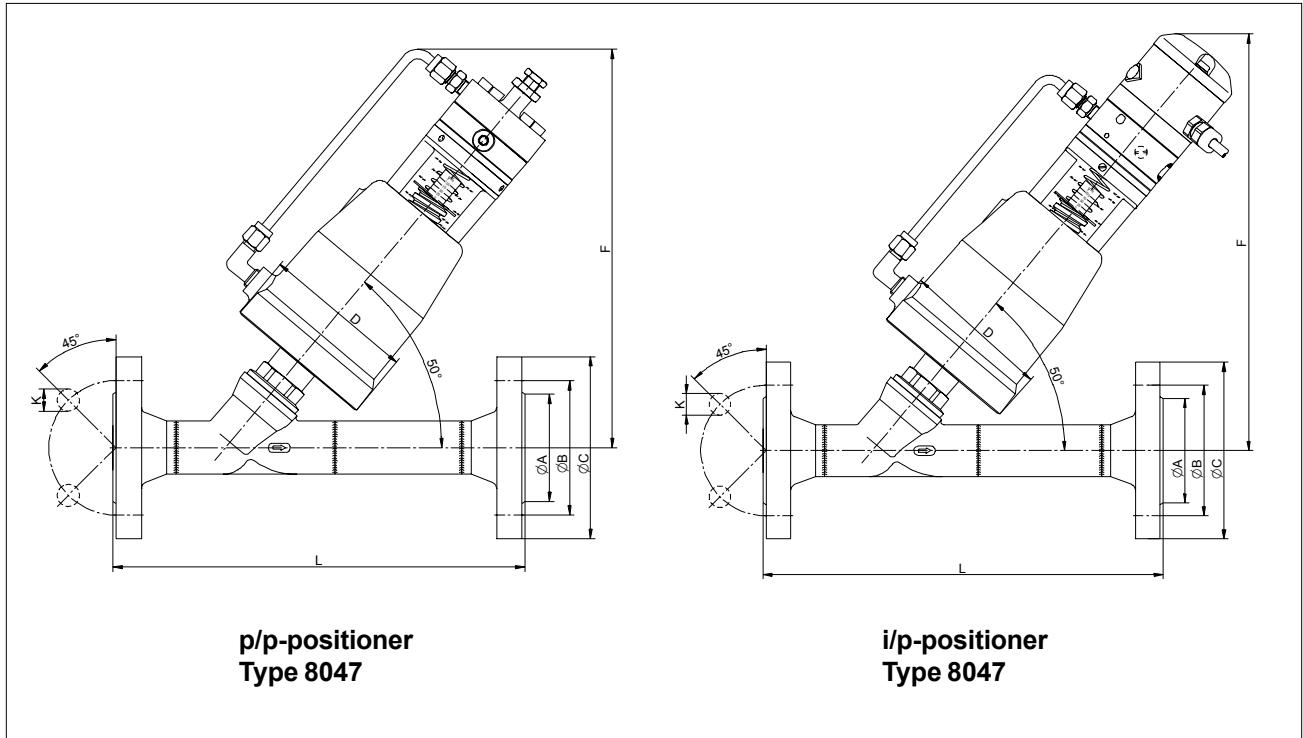


# Flanged Control Valve 7036

with integrated positioner



## Dimensions and Weights



DN	Actuator	A	B	C	D	F		H stroke	K	L*	N	Weight (lbs)	
						p/p	i/p					p/p	i/p
1/2"	3"	1.77	2.56	3.74	3.86	9.65	10.24	0.28	0.55	9.06	4	11.5	12.5
3/4"	3"	2.28	2.95	4.13	3.86	9.65	10.24	0.47	0.55	10.24	4	13.5	14
1"	3"	2.68	3.35	4.53	3.86	10.04	10.63	0.63	0.55	10.24	4	15	15.5
1 1/4"	3"	3.07	3.94	5.51	3.86	10.63	11.22	0.79	0.71	11.81	4	18.5	19
1 1/4"	5"	3.07	3.94	5.51	5.75	11.81	12.4	0.79	0.71	11.81	4	24	24.5
1 1/2"	3"	3.46	4.33	5.91	3.86	10.83	11.42	0.91	0.71	11.81	4	20	20.5
1 1/2"	5"	3.46	4.33	5.91	5.75	12.01	12.6	0.91	0.71	11.81	4	25.5	26.5
2"	3"	4.02	4.92	6.5	3.86	11.02	11.61	1.14	0.71	13.78	4	24.5	25
2"	5"	4.02	4.92	6.5	5.75	12.2	12.8	1.14	0.71	13.78	4	30	31

\*body dimension L acc. ASME B16.5

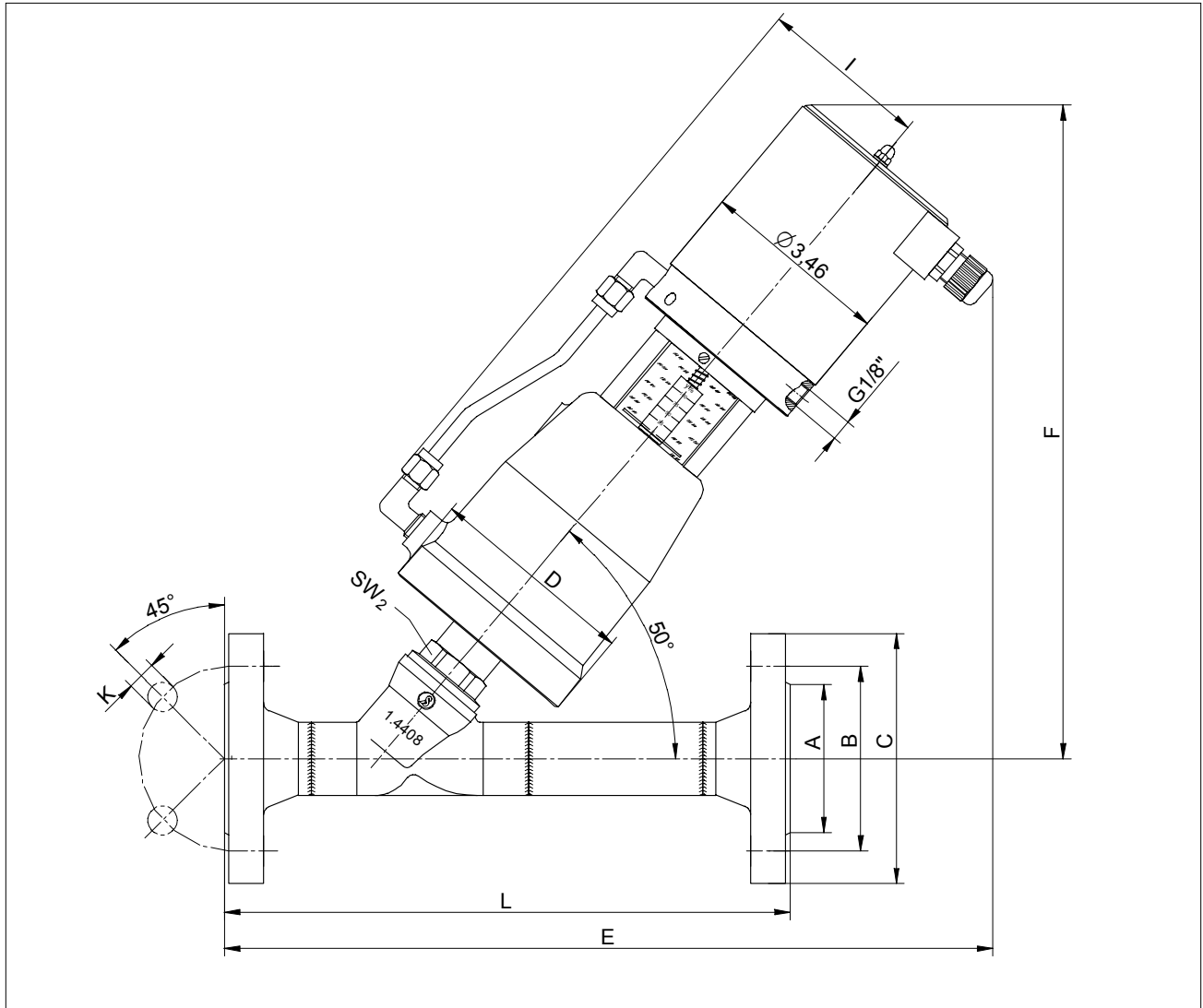
Dimensions in inch

# Flanged Control Valve 7036

with integrated positioner, Type 8048



## Dimensions and Weights



DN	Actuator	A	B	C	D	E	F	I	SW2	K	L*	N	Weight (lbs) Typ 8048
1/2"	3"	1.77	2.56	3.74	3.86	13.39	11.42	3.15	1.18	0.55	9.06	4	12.5
3/4"	3"	2.28	2.95	4.13	3.86	13.58	11.61	3.15	1.18	0.55	10.24	4	14.5
1"	3"	2.68	3.35	4.53	3.86	13.98	11.81	3.15	1.18	0.55	10.24	4	16
1 1/4"	3"	3.07	3.94	5.51	3.86	14.76	12.4	3.15	1.18	0.71	11.81	4	19
1 1/4"	4"	3.07	3.94	5.51	5.75	15.94	13.58	4.13	1.18	0.71	11.81	4	25
1 1/2"	3"	3.46	4.33	5.91	3.86	14.96	12.6	3.15	1.18	0.71	11.81	4	21
1 1/2"	4"	3.46	4.33	5.91	5.75	16.14	13.78	4.13	1.18	0.71	11.81	4	26.5
2"	3"	4.02	4.92	6.5	3.86	15.75	12.99	3.15	1.26	0.71	13.78	4	25.5
2"	4"	4.02	4.92	6.5	5.75	16.93	14.17	4.13	1.26	0.71	13.78	4	31

\*body dimension L acc. ASME B16.5

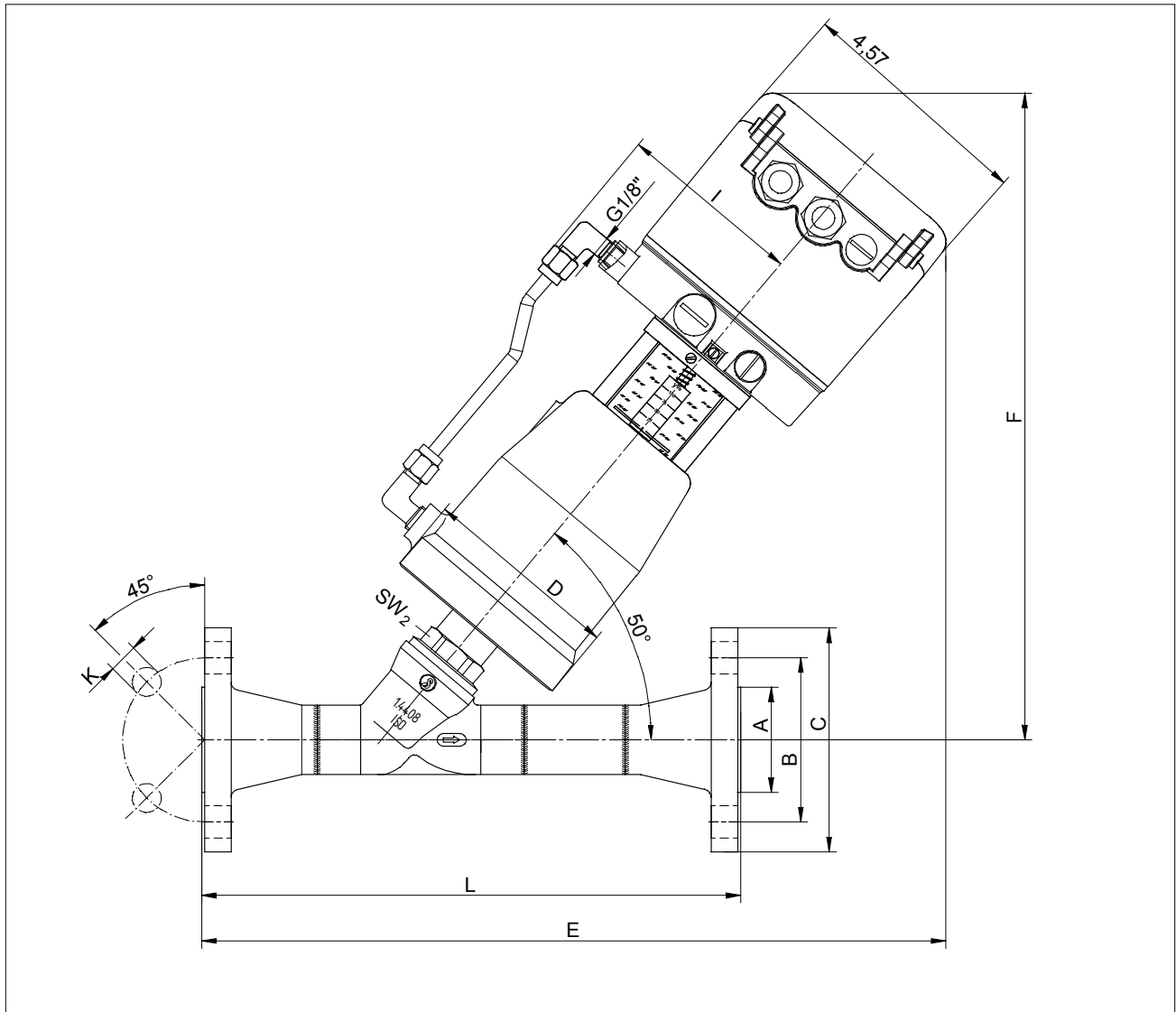
Dimensions in inch

# Flanged Control Valve 7036

with integrated positioner, Type 8049



## Dimensions and Weights



Text and pictures are not binding. We reserve the right, to alter the equipment.

DN	Actuator	A	B	C	D	E	F	I	SW2	K	L*	N	Weight (kg) Typ 8049
1/2"	3"	1.77	2.56	3.74	3.86	12.99	11.89	3.15	1.18	0.55	9.06	4	13
3/4"	3"	2.28	2.95	4.13	3.86	13.19	12.09	3.15	1.18	0.55	10.24	4	15
1"	3"	2.68	3.35	4.53	3.86	13.58	12.28	3.15	1.18	0.55	10.24	4	16.5
1 1/4"	3"	3.07	3.94	5.51	3.86	14.37	12.87	3.15	1.18	0.71	11.81	4	19
1 1/4"	4"	3.07	3.94	5.51	5.75	15.55	14.06	4.13	1.18	0.71	11.81	4	25.5
1 1/2"	3"	3.46	4.33	5.91	3.86	14.57	13.07	3.15	1.18	0.71	11.81	4	21.5
1 1/2"	4"	3.46	4.33	5.91	5.75	15.75	14.25	4.13	1.18	0.71	11.81	4	27.5
2"	3"	4.02	4.92	6.5	3.86	15.35	13.46	3.15	1.26	0.71	13.78	4	26
2"	4"	4.02	4.92	6.5	5.75	16.54	14.65	4.13	1.26	0.71	13.78	4	31.5

\*body dimension L acc. ASME 16.5

Dimensions in inch