

Compact digital positioner for pneumatic control valves with linear or rotary actuators.

- Positioner can be integrated into valve actuator (no external moving parts for stroke feedback)
- Inductive sensor for non-Contact stroke feedback
- Wide range of strokes .12 - 2 inches
- No air loss
- Self-adapting to valve actuator
- Flow configuration by PC-software
- Vibration resistant
- Available with stainless steel casing
- Patented (US Patent No. 5,878,765)



Technical Information

Set point signal	0/4 - 20 mA, 0/2 - 10 V
Supply energy, electrical	24 VDC
Supply energy, pneumatical	45 ... 90 psi
Stroke range linear actuators	0.12 ... 1 inch 0.35 ... 2 inches (optional)
Rotation range rotary actuators	180° max.
Mounting to control valve	Standardized mounting kits, optical position indicator for linear actuators available
Adaption to range and zero	Self-learning
Configuration	with PC-Software
Air delivery* linear actuator	1 scfm 3.5 scfm (optional)
Air delivery* rotary actuator	single acting: 1 scfm single acting: 3.5 scfm (optional) double acting: 3.5 scfm
System air consumption	none
Ambient temperature limits	-4 ... +170 °F
Class of protection acc. DIN 40050	IP65

* 90 psi supply air

Digital Positioner 8048

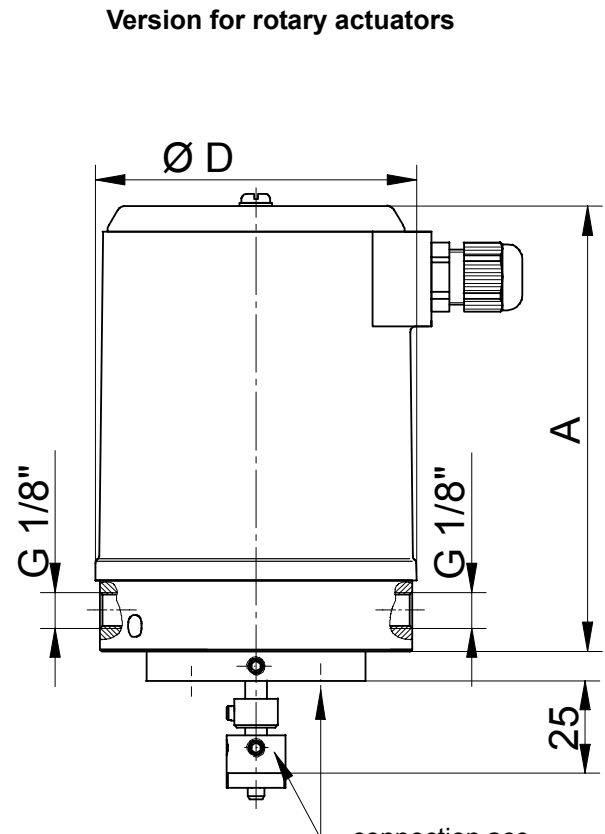
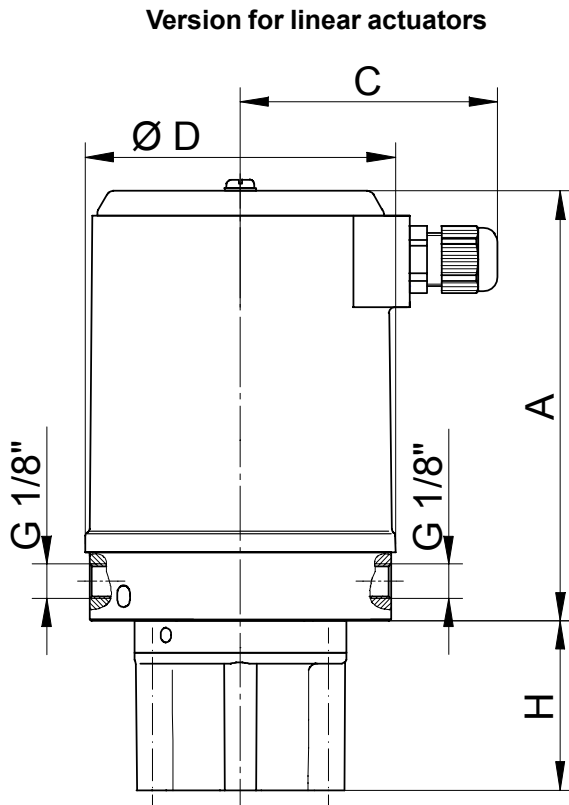
Materials

Positioner housing	Linear and rotary actuator, single acting	PA 6.6 polyamid, glass fibre reinforced stainless steel 1.4305 (option)
	Rotary actuator, double acting	Aluminium, black anodised
Ground plate	Linear and rotary actuator, single acting	Aluminium, black anodised, stainless steel 1.4305 (option)
	Rotary actuator, double acting	Aluminium, black anodised

Dimensions and Weights

Version	A* inch	C inch	D inch	H inch	Weight lbs
Stroke range up to 0.9"	4.8	2.9	3.3	depends on mounting kit	1.68
Stroke range up to 2"	5.9	2.9	3.3	depends on mounting kit	1.87
Rotary actuator, single acting	4.8	2.9	3.3	1	1.68
Rotary actuator, double acting	4.8	3.7	4.7	1	2.43

* + 1" with integrated process controller

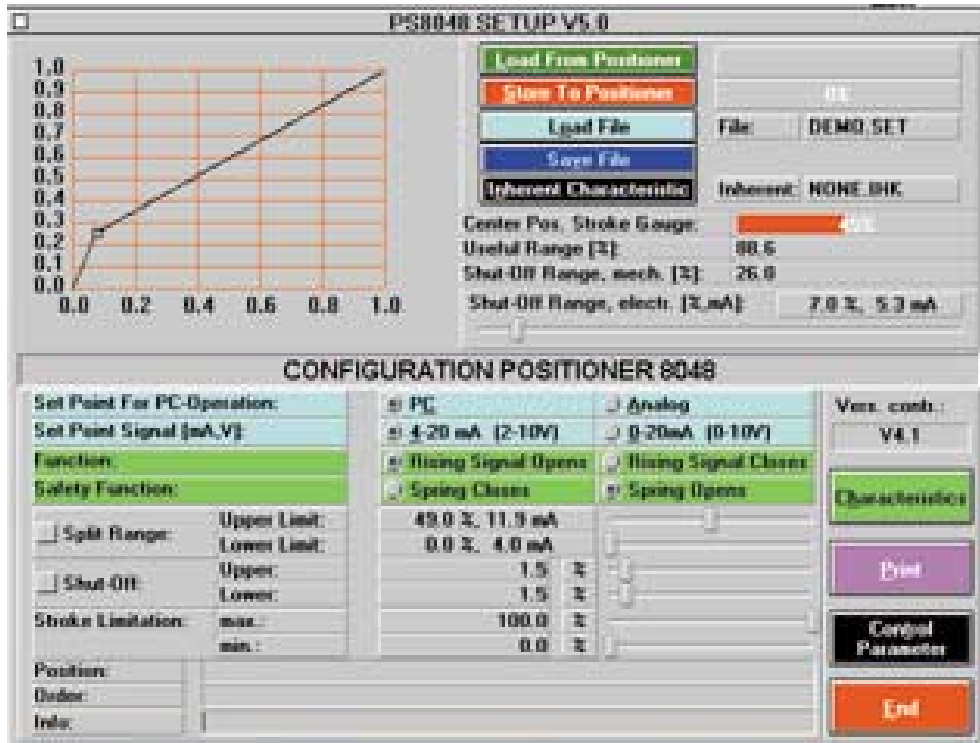


connection acc.
VDI/VDE 3845

Digital Positioner 8048

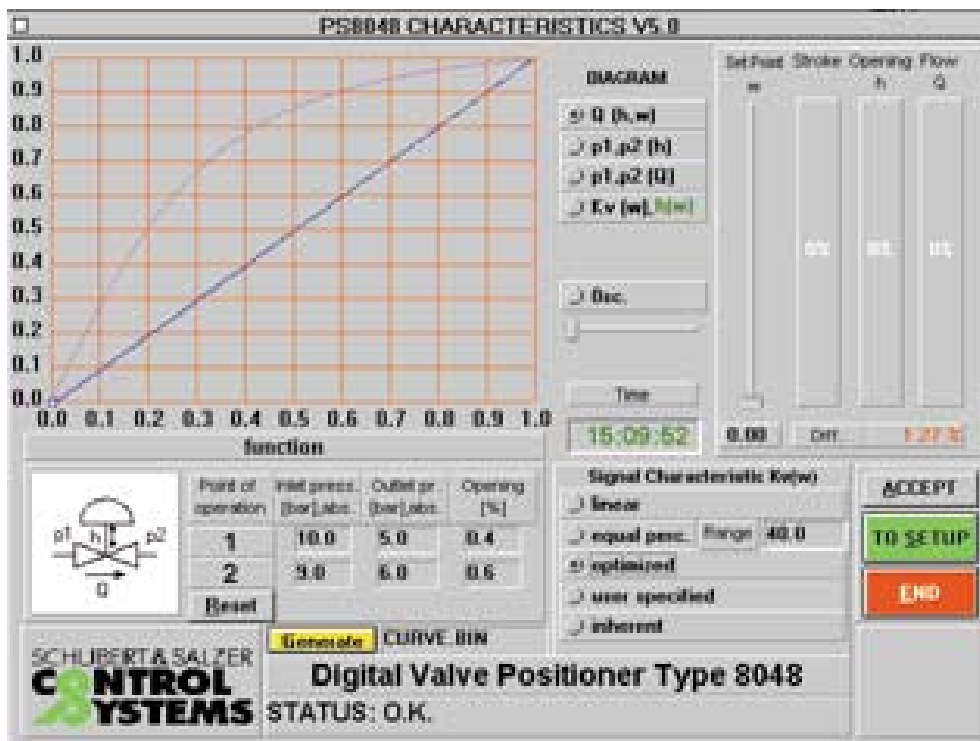
Configuration-Software - Setup-Parameters

Adjustment of function parameters; loading, saving and printing the SETUP-file; check of self adaption to the actuator.



Configuration-Software - Flow Characteristic Functions

Adjustment of flow and display of various flow related functions.



Application Examples



Diaphragm valve for sterile applications

Pinch valve

Rotary actuator

Sliding gate valves

Diaphragm valve

Low flow valve

Angle seated control valve

Text and pictures are not binding. We reserve the right to alter the equipment.

For local closed loop control applications the positioner can be fitted with an integrated process controller.

Features:

- Suitable for fast control loops as cycle time 50 ms only
- Internal or external setpoint
- Bright LED-display
- Analog process value inputs (also with gauge supply) and Pt100
- Configurable as P-, PI-, PD- and PID-controller
- Retrofit possible for existing positioners

See data sheet 8048IPC for details.